



MONTHLY MEMBERSHIP PROGRESS REPORT

District 12 S

Results as of: 4/30/2017

GMT: HARVEY WHITLEY

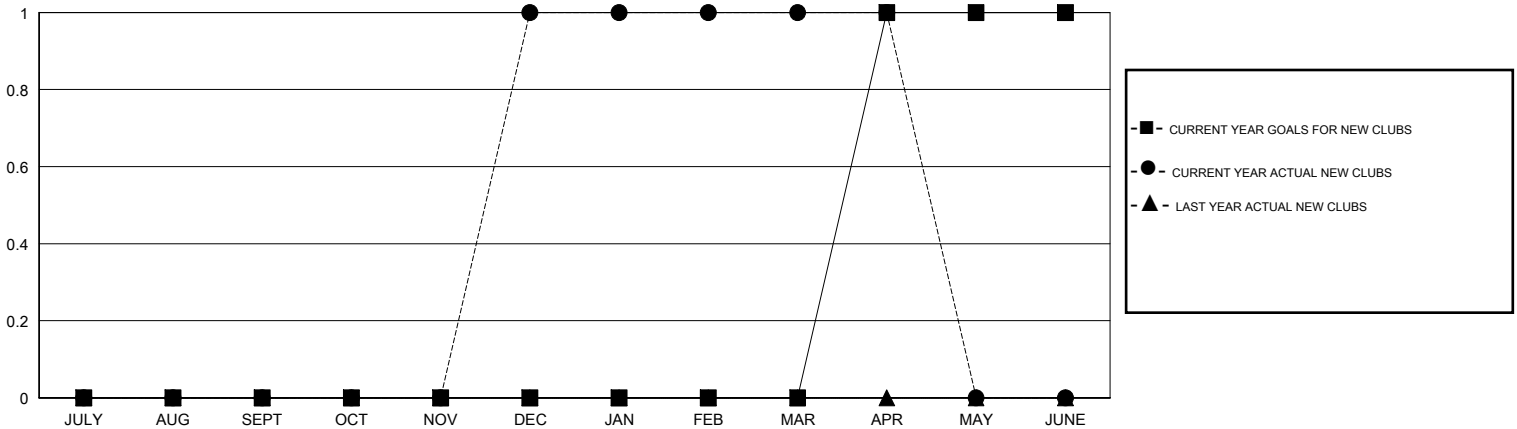
LOCATION TENNESSEE

GMT CA

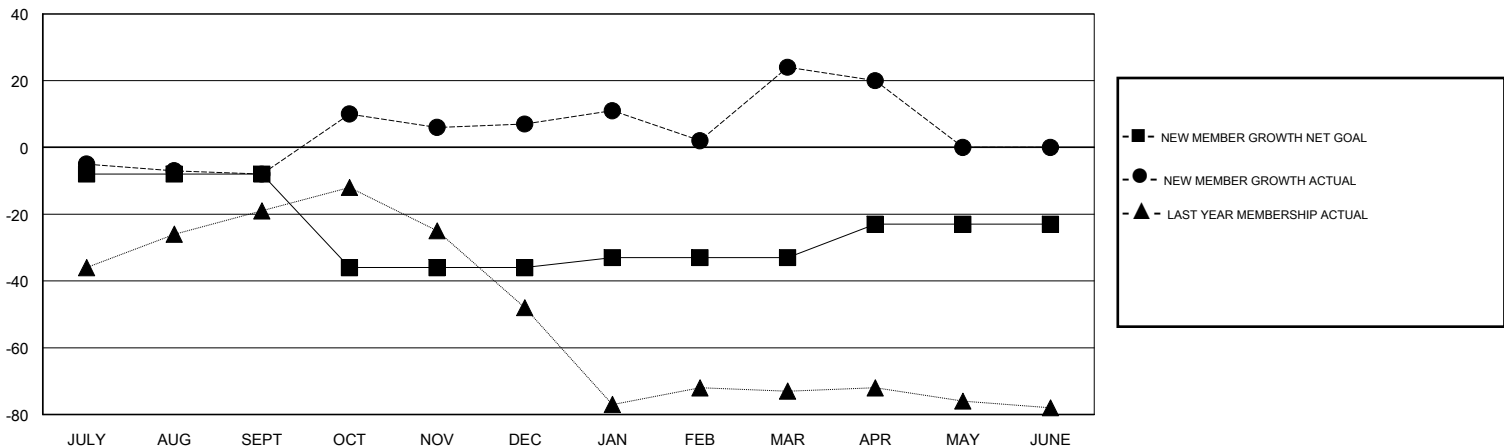
Clubs			
RESULTS FOR 2016-2017			
QUARTER	NEW CLUB GOAL	NEW CLUBS	DROPPED CLUBS
JULY/AUG/SEPT	0	0	0
OCT/NOV/DEC	0	1	0
JAN/FEB/MAR	0	0	0
APR/MAY/JUNE	1	0	0

Members			
RESULTS FOR 2016-2017			
QUARTER	NEW MEMBER GROWTH NET GOAL (not reinstated or transfers)	NEW MEMBER GROWTH ACTUAL (not reinstated or transfers)	DROPPED MEMBERS ACTUAL (including transfers)
JULY/AUG/SEPT	-8	37	45
OCT/NOV/DEC	-28	59	44
JAN/FEB/MAR	3	50	33
APR/MAY/JUNE	10	7	11

GOALS AND ACTUAL NEW CLUBS CUMULATIVE



GOALS AND ACTUAL MEMBERS CUMULATIVE



DROPPED CLUBS: 0	26 CLUBS OF 50 ADDED 1 OR MORE NEW MEMBERS	GENDER DISTRIBUTION
		MALE 729 (59.27%)
		FEMALE 501 (40.73%)
DROPPED MEMBERS	CLICK HERE FOR CUMULATIVE MEMBERSHIP DATA	TOTAL FAMILY UNIT MEMBERS 258
DECEASED 19		FAMILY MEMBERS PAYING HALF DUES 133
CLUB CANCELLED 0		
OTHER 114		
TOTAL 133		